



MONTHLY MEMBERSHIP PROGRESS REPORT

District 2 T2

Results as of: 5/31/2016

GMT: HAL GRIFFIN

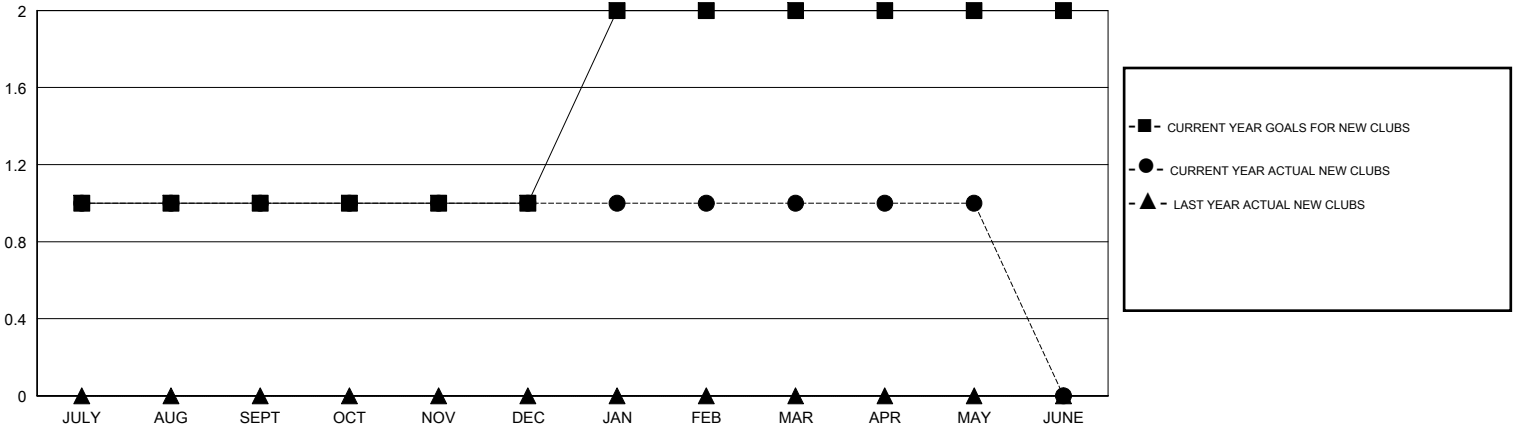
LOCATION TEXAS

GMT CA 1

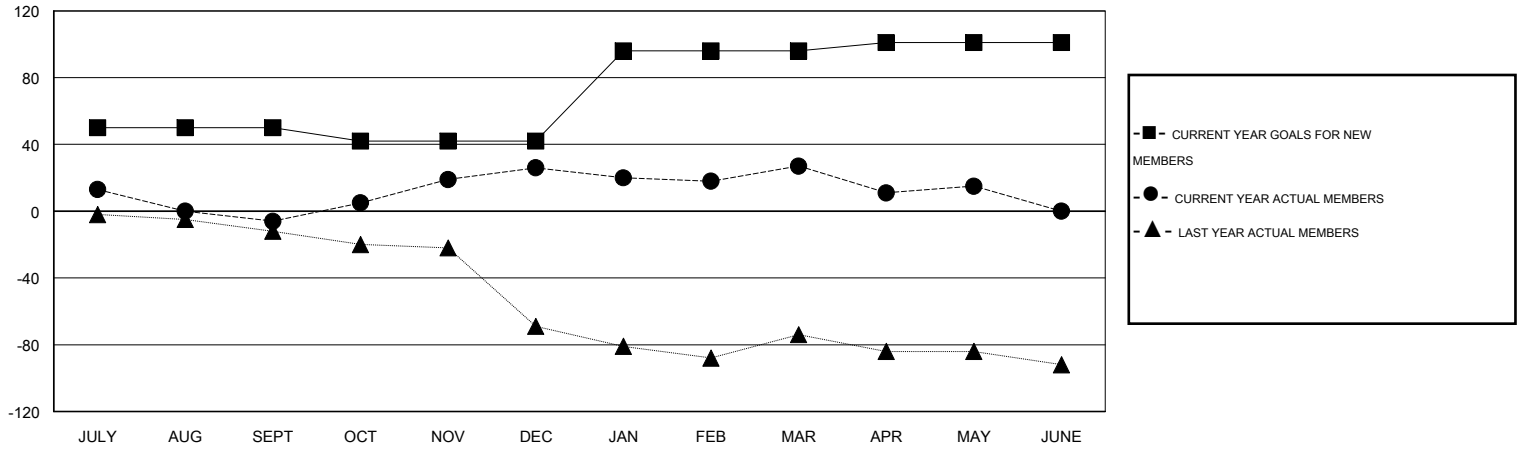
Clubs				
RESULTS FOR 2015-2016				
QUARTER	NEW CLUB GOAL	NEW CLUBS	DROPPED CLUBS	NET GAIN/LOSS
JULY/AUG/SEPT	1	1	0	1
OCT/NOV/DEC	0	0	0	0
JAN/FEB/MAR	1	0	1	-1
APR/MAY/JUNE	0	0	1	-1

Members				
RESULTS FOR 2015-2016				
QUARTER	NEW MEMBER GOAL	CHARTER AND NEW MEMBERS ADDED	DROPPED MEMBERS	NET GAIN/LOSS
JULY/AUG/SEPT	50	51	57	-6
OCT/NOV/DEC	-8	52	20	32
JAN/FEB/MAR	54	47	46	1
APR/MAY/JUNE	5	23	35	-12

GOALS AND ACTUAL NEW CLUBS CUMULATIVE



GOALS AND ACTUAL MEMBERS CUMULATIVE



DROPPED CLUBS: 2	27 CLUBS OF 45 ADDED 1 OR MORE NEW MEMBERS	<u>GENDER DISTRIBUTION</u>	
		MALE	1,013 (76.40%)
<u>DROPPED MEMBERS</u>	CLICK HERE FOR HEALTH ASSESSMENT DATA	FEMALE	313 (23.60%)
DECEASED		15	FAMILY UNIT MEMBERS
CLUB CANCELLED	10	HEAD OF HOUSEHOLD	53
OTHER	133	NON-HEAD OF HOUSEHOLD	55
TOTAL	158		